

FED. ROAD DIST. NO.	STATE	FED. AID PROJ. NO.	SHEET NO.	TOTAL SHEETS
4	WISC.		1	13

DIVISION JOB NO. 4363

**INDEX OF SHEETS**

1. TITLE SHEET
2. TYPICAL CROSS SECTION OF IMPROVEMENT & ESTIMATE
- 3-4. CONSTRUCTION DETAILS FOR 20 FT. CONCRETE PAVEMENT
5. PLAN AND PROFILE STA. 0+67.8 TO STA. 55
6. " " " " STA. 52 TO STA. 66+68.6
- 7-8. DRAINAGE STRUCTURES
- 9-12. CROSS-SECTIONS
13. GRADE SHEET

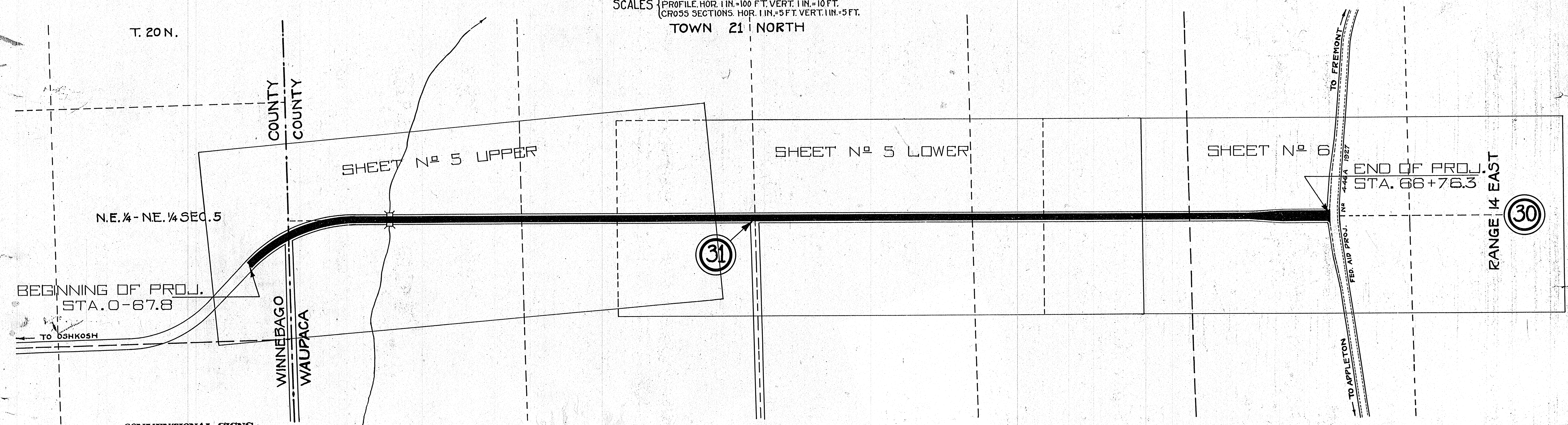
**STATE OF WISCONSIN**  
**WISCONSIN HIGHWAY COMMISSION**

---

**PLAN AND PROFILE OF PROPOSED**  
**SOUTH COUNTY LINE - FREMONT ROAD**  
**WAUPACA COUNTY**  
**WINNEBAGO COUNTY**  
**STATE AID PROJECT**

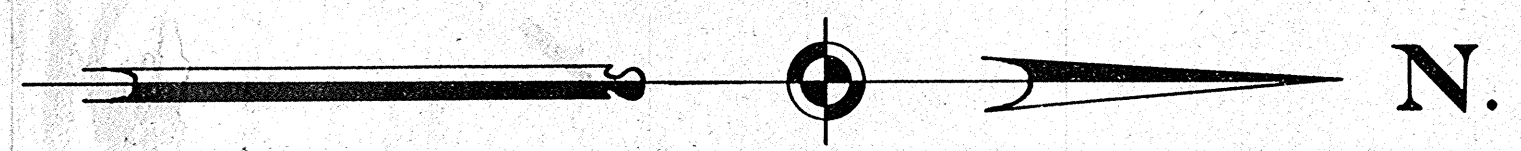
COMMENCING ± 318 FT. SOUTH OF THE NORTH WINNEBAGO COUNTY LINE ON S.T.H. N<sup>o</sup> 95  
EXTENDING NORTHERLY 6699.2 FT. IN WAUPACA COUNTY TO JCT. WITH U.S.H. N<sup>o</sup> 10

SCALES { PLAN, 1 IN. = 100 FT.  
PROFILE, HOR. 1 IN. = 100 FT. VERT. 1 IN. = 10 FT.  
CROSS SECTIONS, HOR. 1 IN. = 5 FT. VERT. 1 IN. = 5 FT.  
TOWN 21 NORTH



**CONVENTIONAL SIGNS**

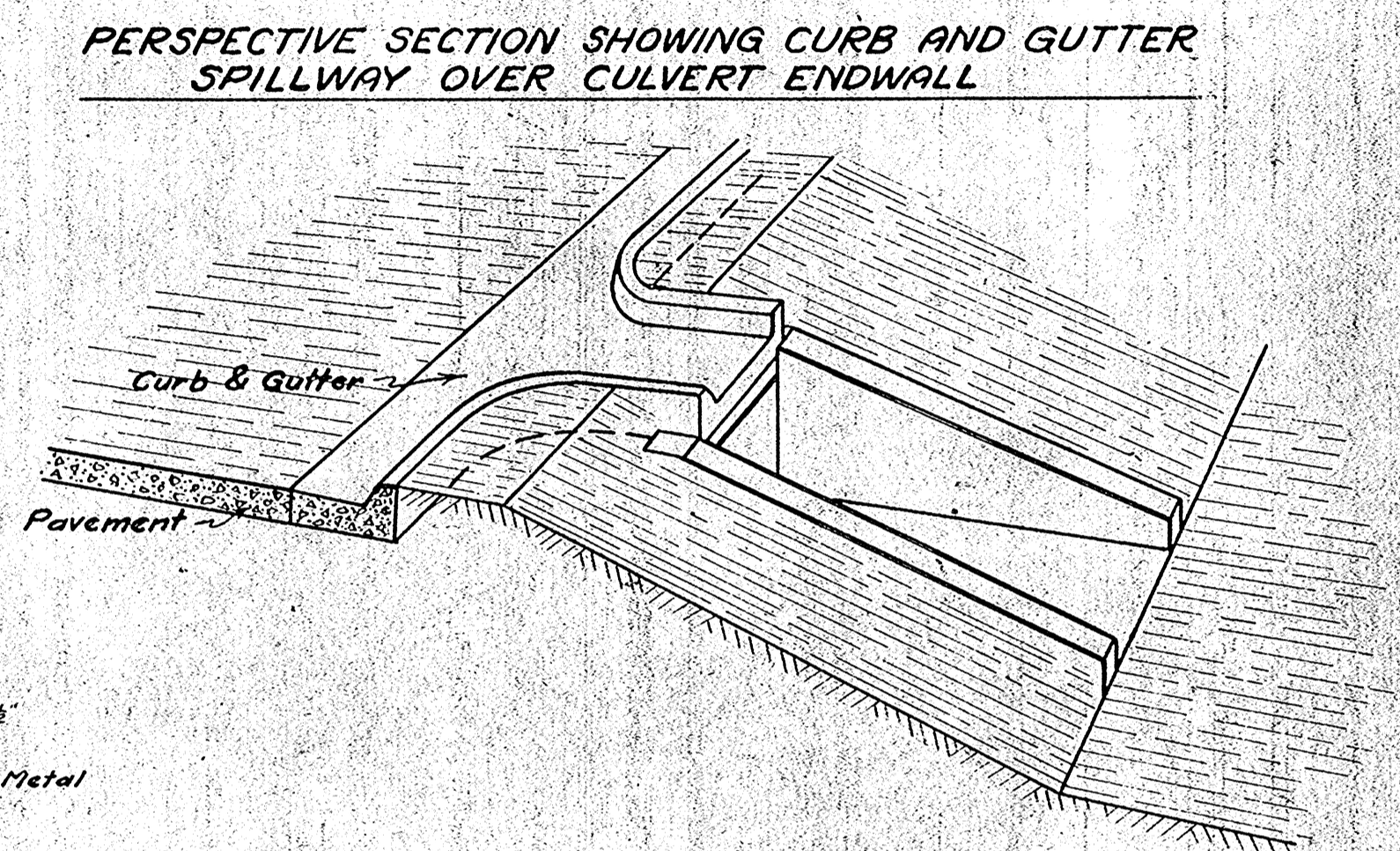
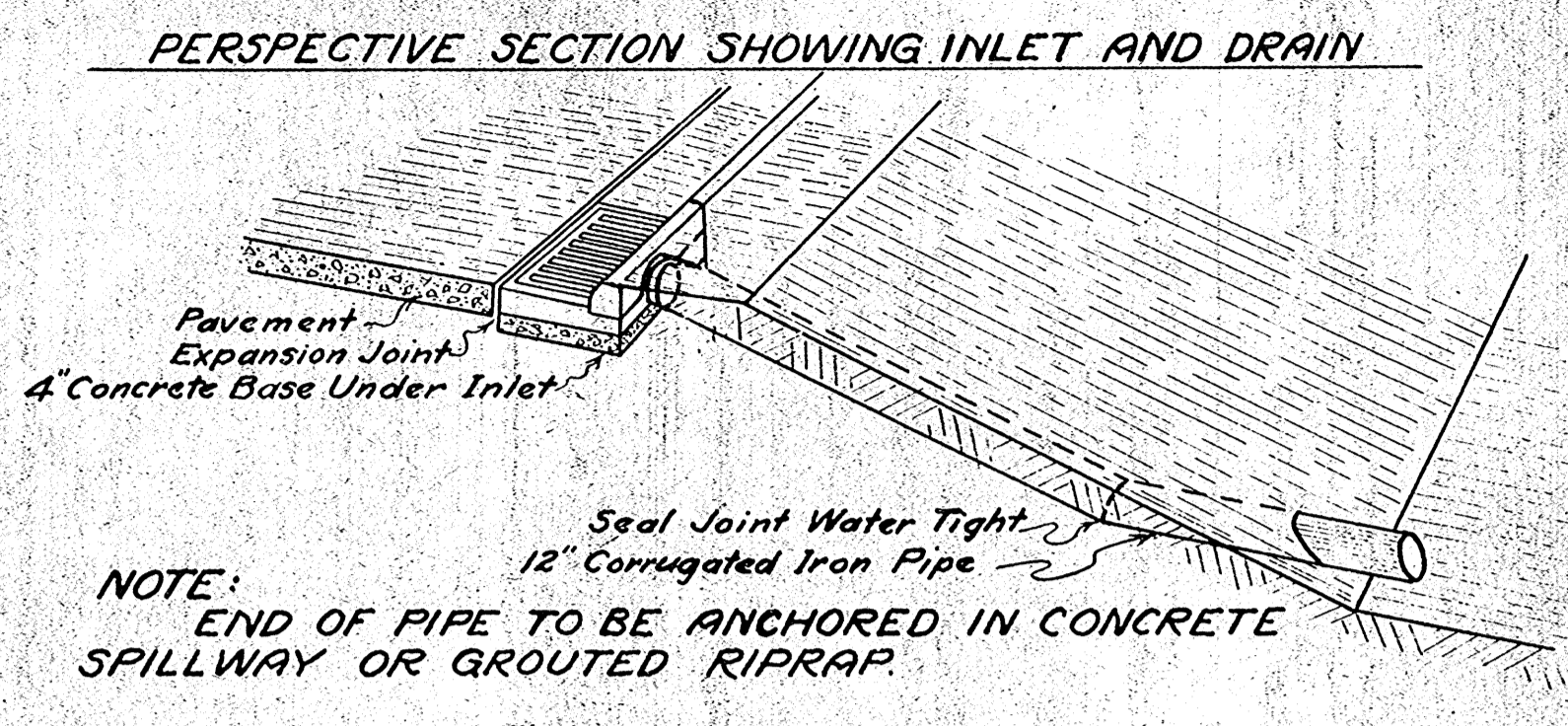
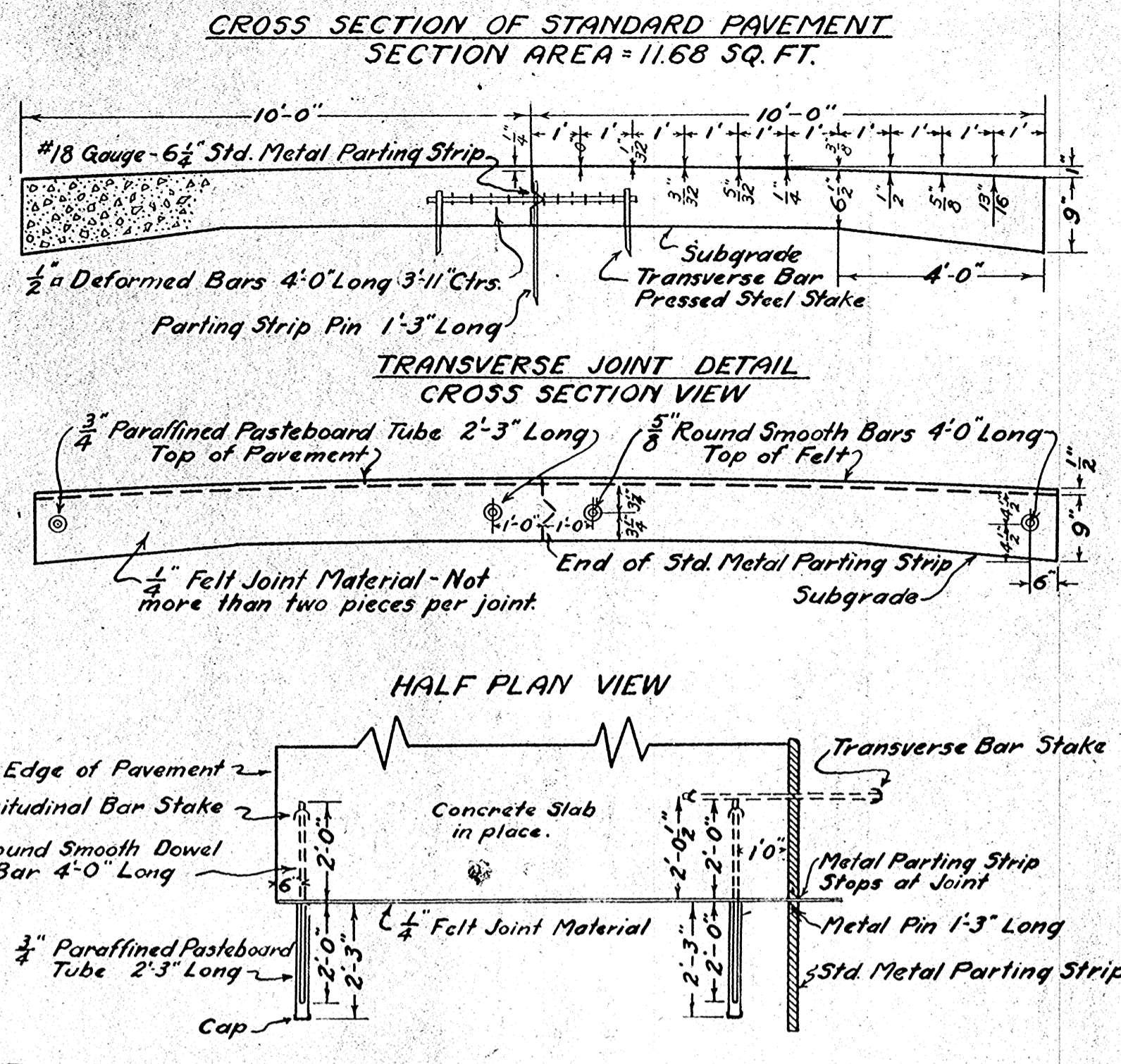
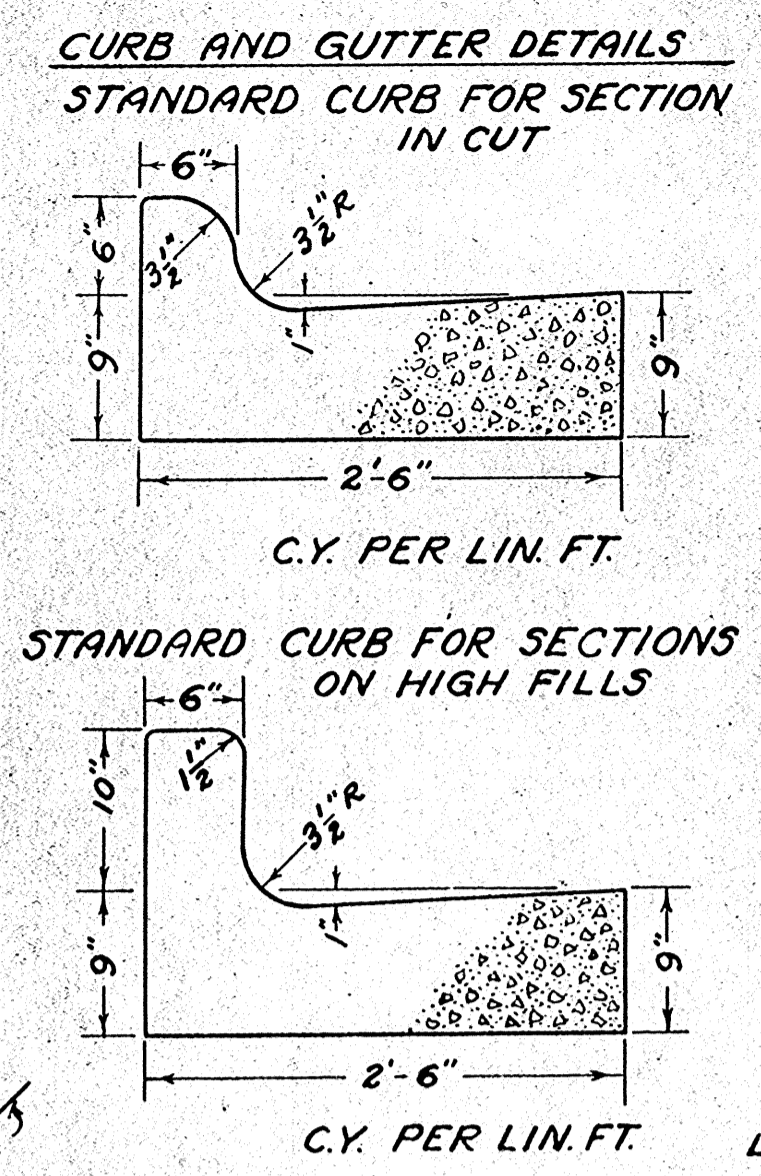
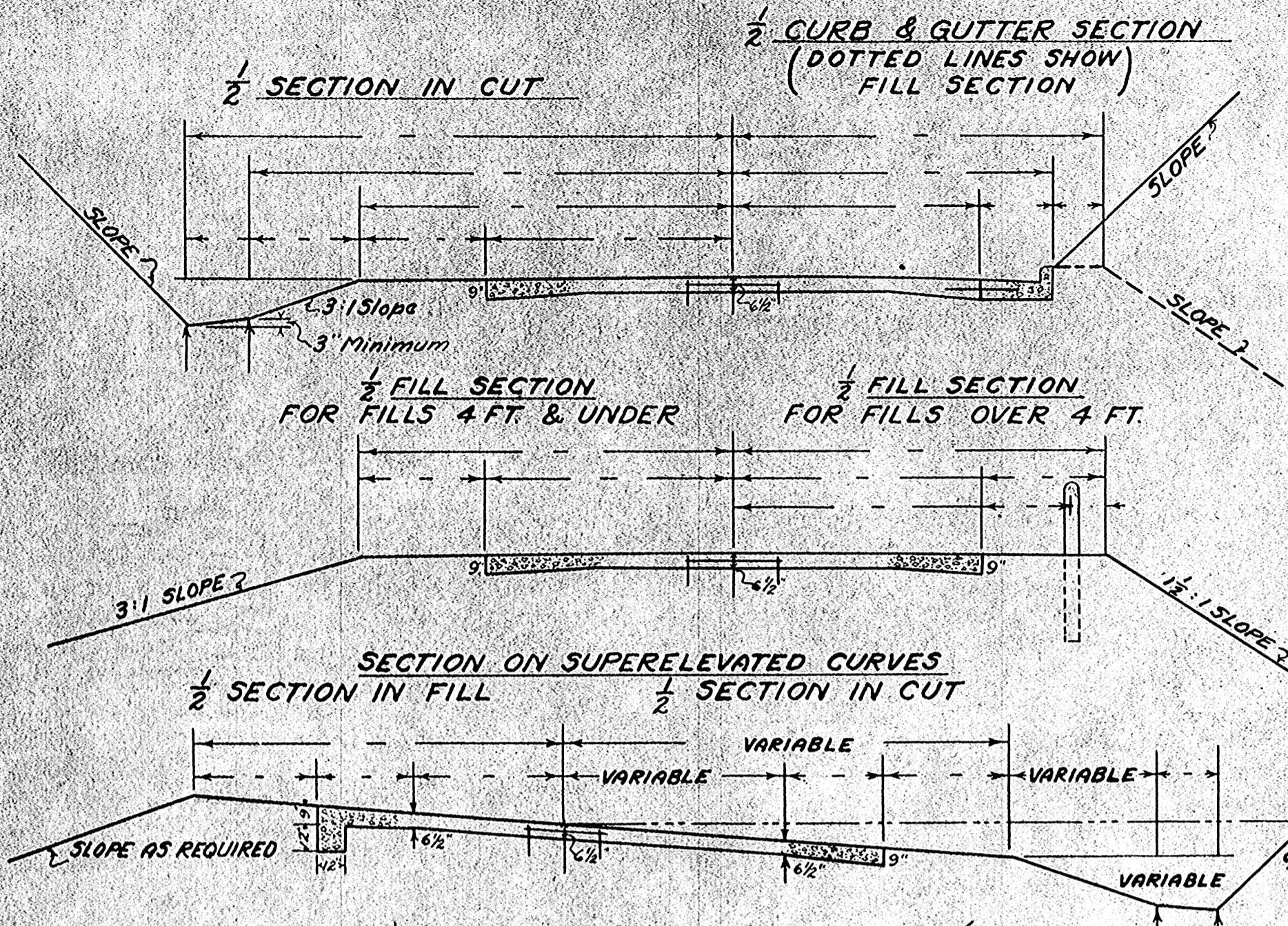
AND NATIONAL LINE	— — — — —	CULVERTS	— — — — —
TY LINE	— — — — —	DROP INLET	— — — — —
VILLAGE, OR TOWN	— — — — —	TROLLEY POLE	— — — — —
SHIP LINE	— — — — —	POWER POLE	— — — — —
ON LINE	— — — — —	TELEPHONE OR TELEGRAPH POLES	— — — — —
E LINE	— — — — —	MAIL BOX	— — — — —
RAIL	— — — — —	REFERENCE STAKES	— — — — —
ICED PROPERTY	— — — — —	MARSH	— — — — —
OF WAY LINE	— — — — —	HEDGE	— — — — —
ELED WAY	— — — — —	TREES	— — — — —
ROADS	— — — — —		
NING WALL	— — — — —		
E	— — — — —		
OR SURVEY LINE	— — — — —		



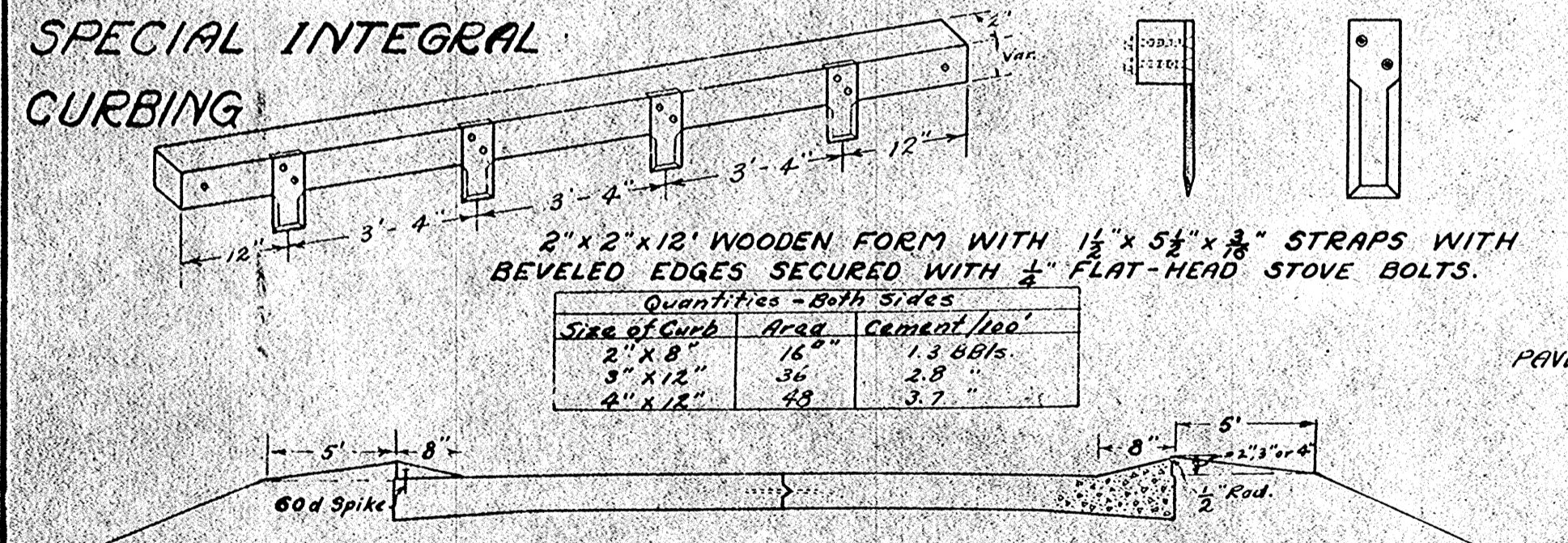
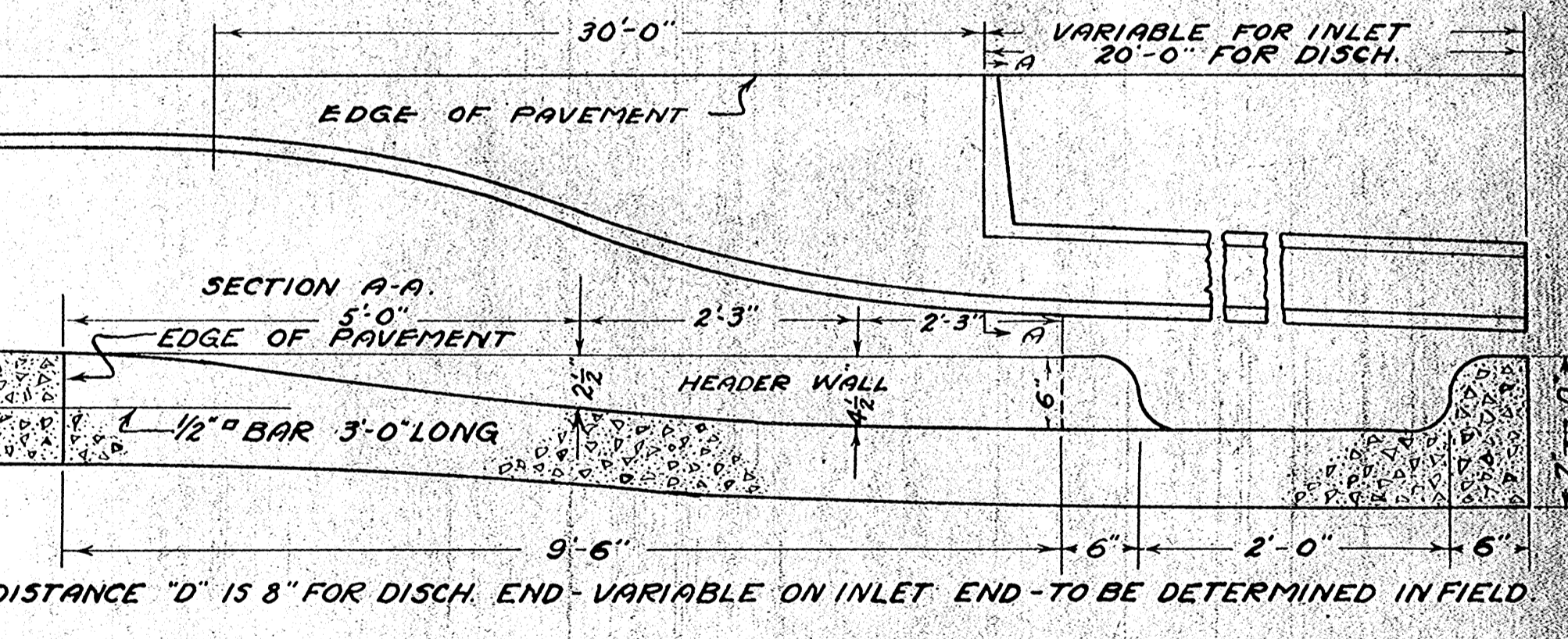
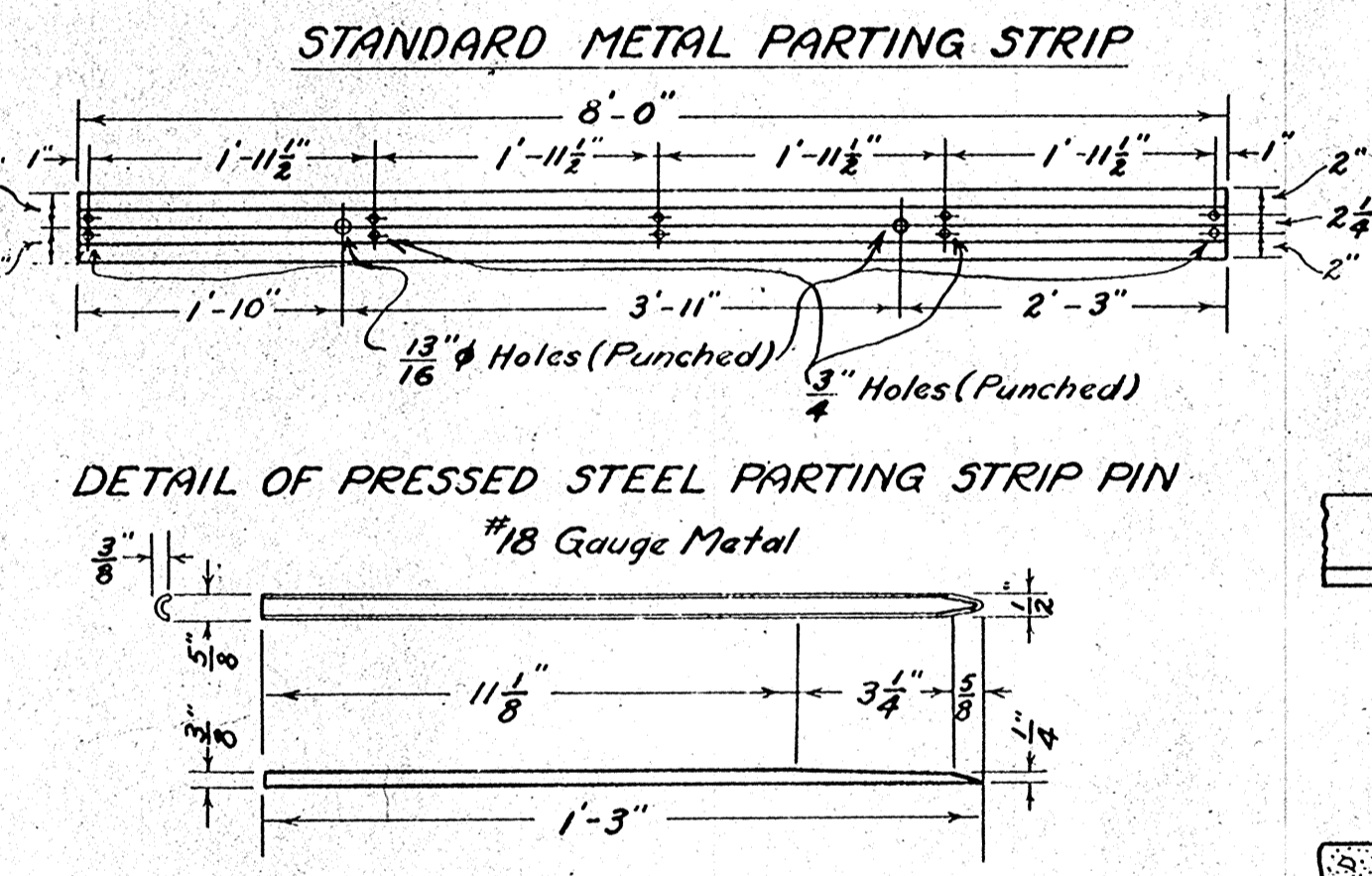
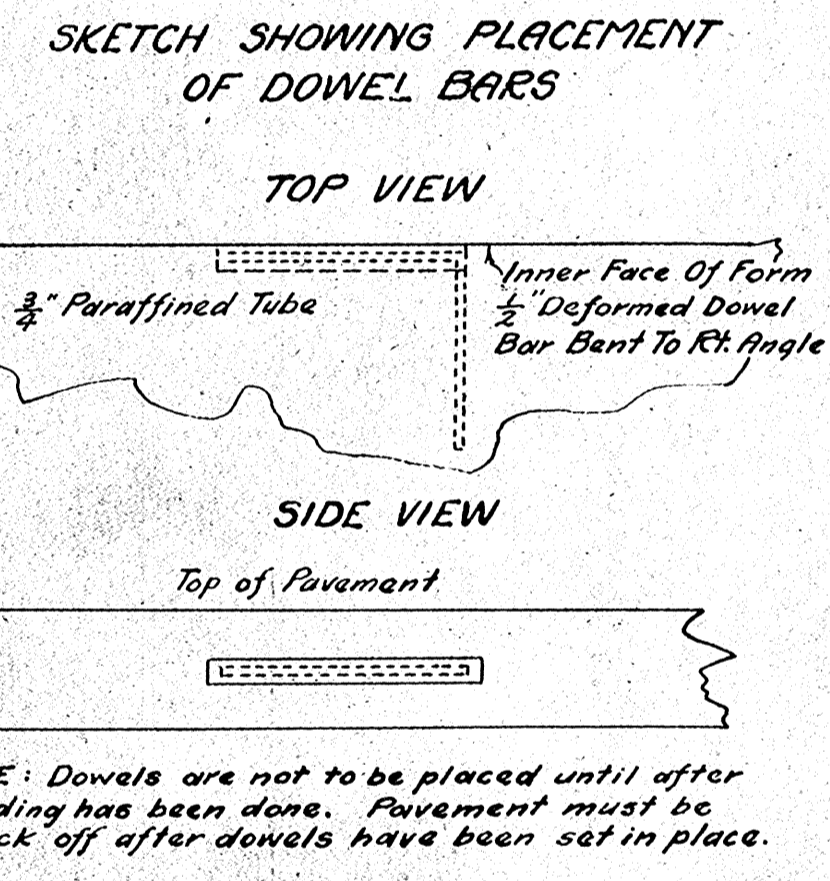
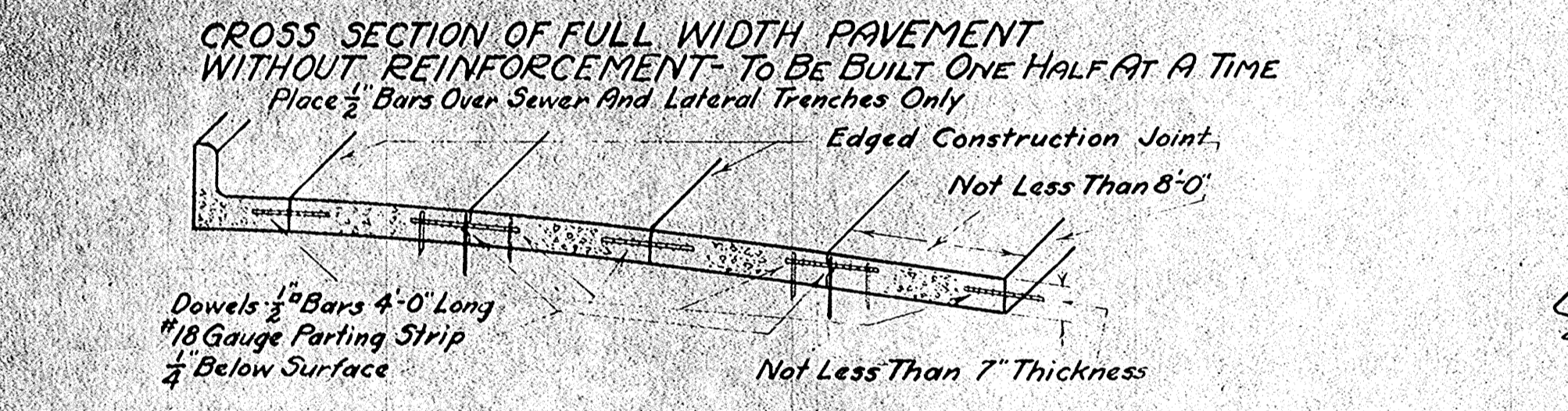
**LAYOUT**  
SCALE 1/8 IN. = 1 MI. OR 1 IN. = 300 FT.  
TOTAL NET LENGTH OF CENTERLINE = 1.27 MI.

<p style="text-align: center;"><b>WISCONSIN HIGHWAY COMMISSION</b> MADISON, WIS.</p> <p>Surveyor... A. D. T. Note Book Loose Leaf  Div. Computer... A. F. A. M. O. Checker...  Div. Checker... E. P. F. Correct</p> <p>CORRECT: <i>F. F. Wenzel</i>  DIVISION ENGINEER</p> <p>RECOMMENDED FOR APPROVAL:  <i>C. R. Reynolds</i>  DESIGN ENGINEER</p> <p>APPROVED: <i>H. J. Kulling</i>  DATE: 2/24 1927  STATE HIGHWAY ENGINEER</p>	<p style="text-align: center;"><b>U. S. DEPARTMENT OF AGRICULTURE</b> BUREAU OF PUBLIC ROADS</p> <p>RECOMMENDED FOR APPROVAL:  [Signature]  DISTRICT ENGINEER</p> <p>APPROVED:  [Signature]  DIRECTOR</p> <p>DATE: [Blank]</p>
--	--

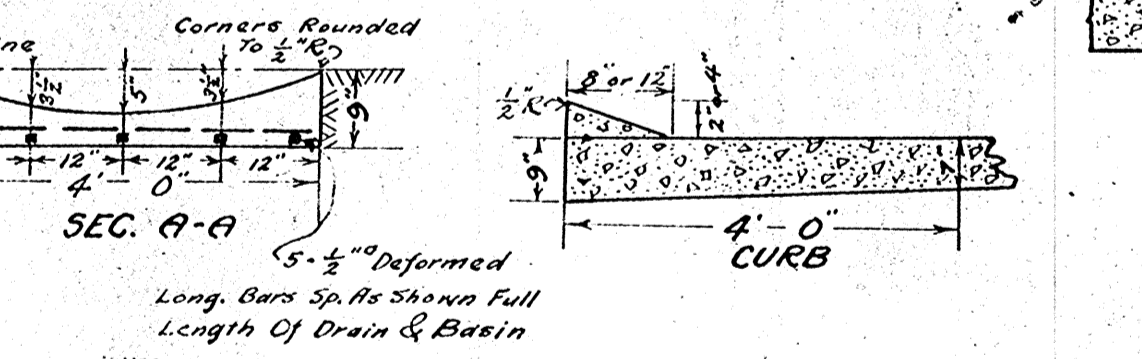
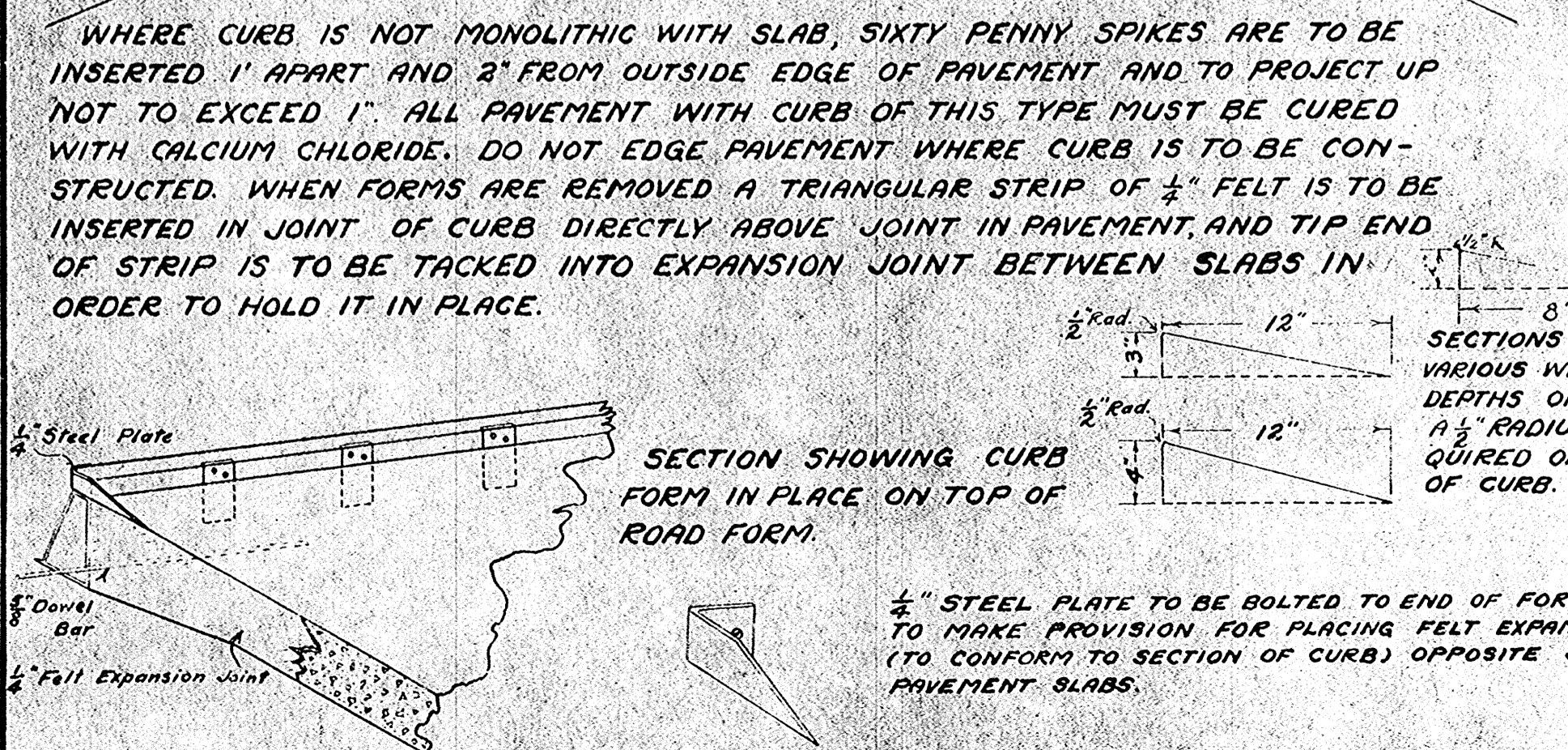
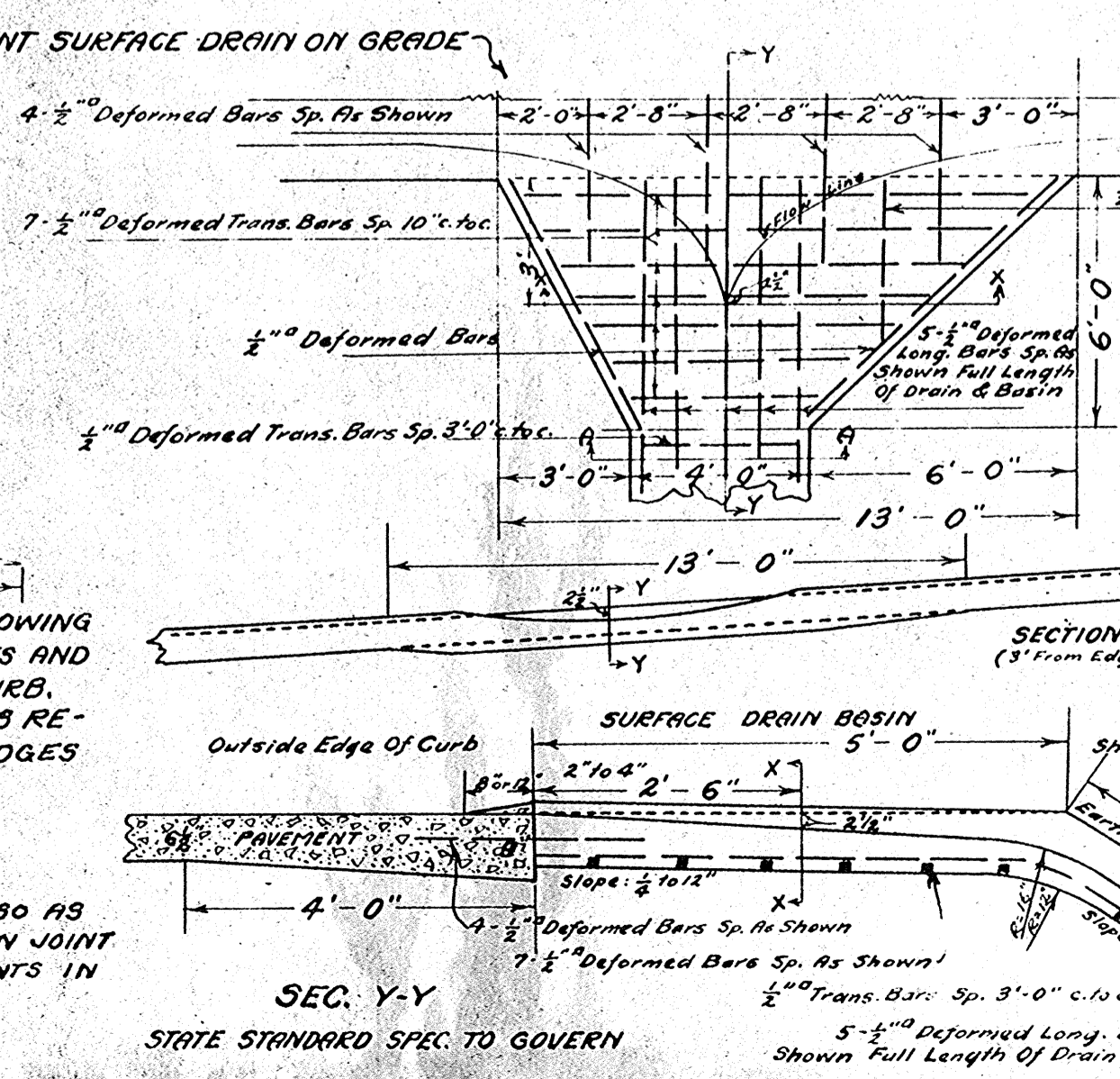




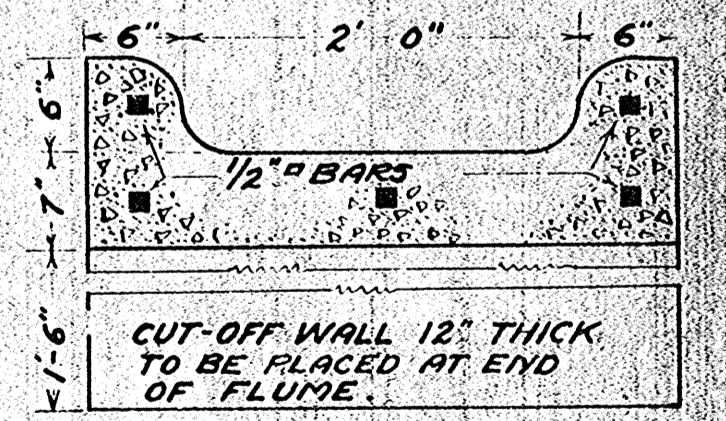
NOTE: (THIS ONLY APPLIES TO LINED CURVES) ALL CURVES TO BE GIVEN STANDARD SUPERELEVATION UNLESS OTHERWISE SPECIFIED. PARTING STRIP TO BE PLACED ON TRUE CENTERLINE OF ROAD AND ALL WIDENING APPLIED TO INSIDE OF CURVE. SURFACE OF PAVEMENT IS FLAT. TRANSITION FROM CROWN TO FLAT SURFACE SHALL COMMENCE 150 FEET BACK OF P.C. OR P.T. AND SHALL TAKE PLACE ACCORDING TO DEGREE OF CURVE IN THE FOLLOWING DISTANCES - FOR 2° & 3° CURVES IN 50 FT., 4° TO 6° CURVES IN 33 FT., 7° TO 28° CURVES IN 25 FT. VARY DEPTH OF DITCH SO NO WATER POCKETS WILL RESULT.



**SPECIAL SIDE DRAIN FOR INTEGRAL CURB**

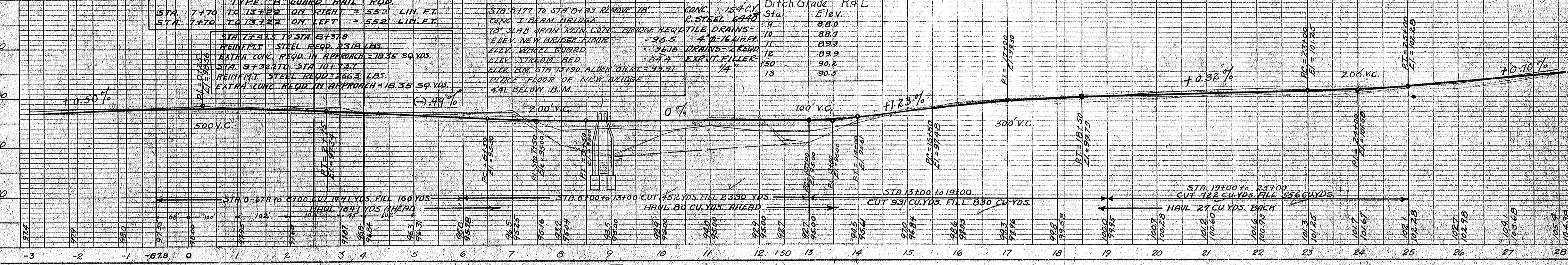
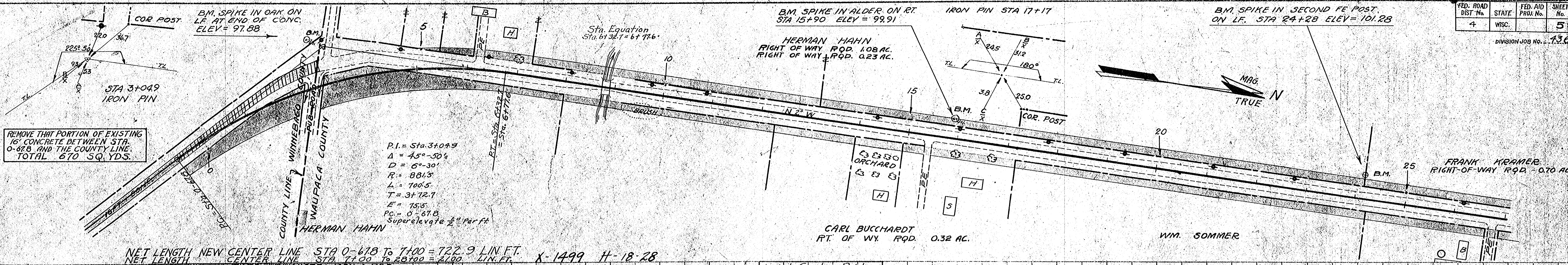


WIDTH OF PAVEMENT FT.	AREA OF SECTION SQ. FT.	CU. YDS. OF CONCRETE PER SQ. YD.	BBLs. OF CEMENT PER SQ. YD.	BAGS PER SLAB 4'-2" LONG
18 FT.	10.58	0.196	0.294	111
20 FT.	11.66	0.1945	0.292	123

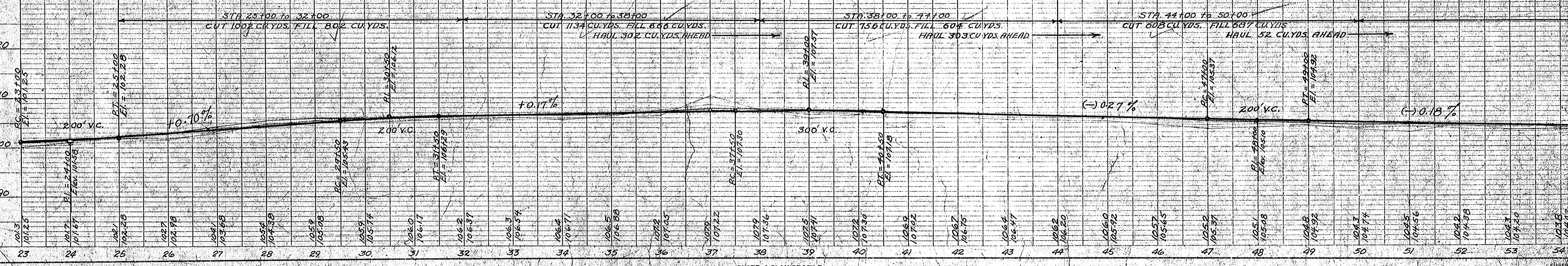
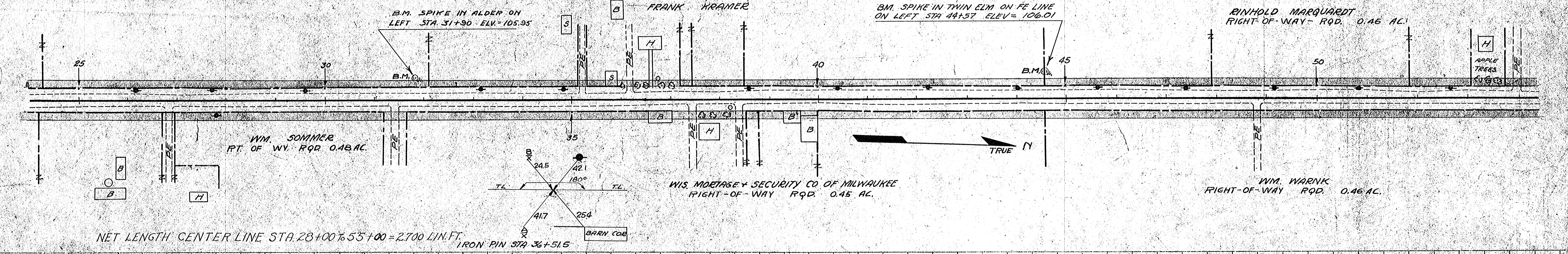




DATE: 10/1/49  
 DRAWN BY: H.P.H.  
 CHECKED BY: W.A.H.  
 SUPERVISOR: W.A.H.  
 PROJECT: 104-100  
 SHEET: 5 OF 13

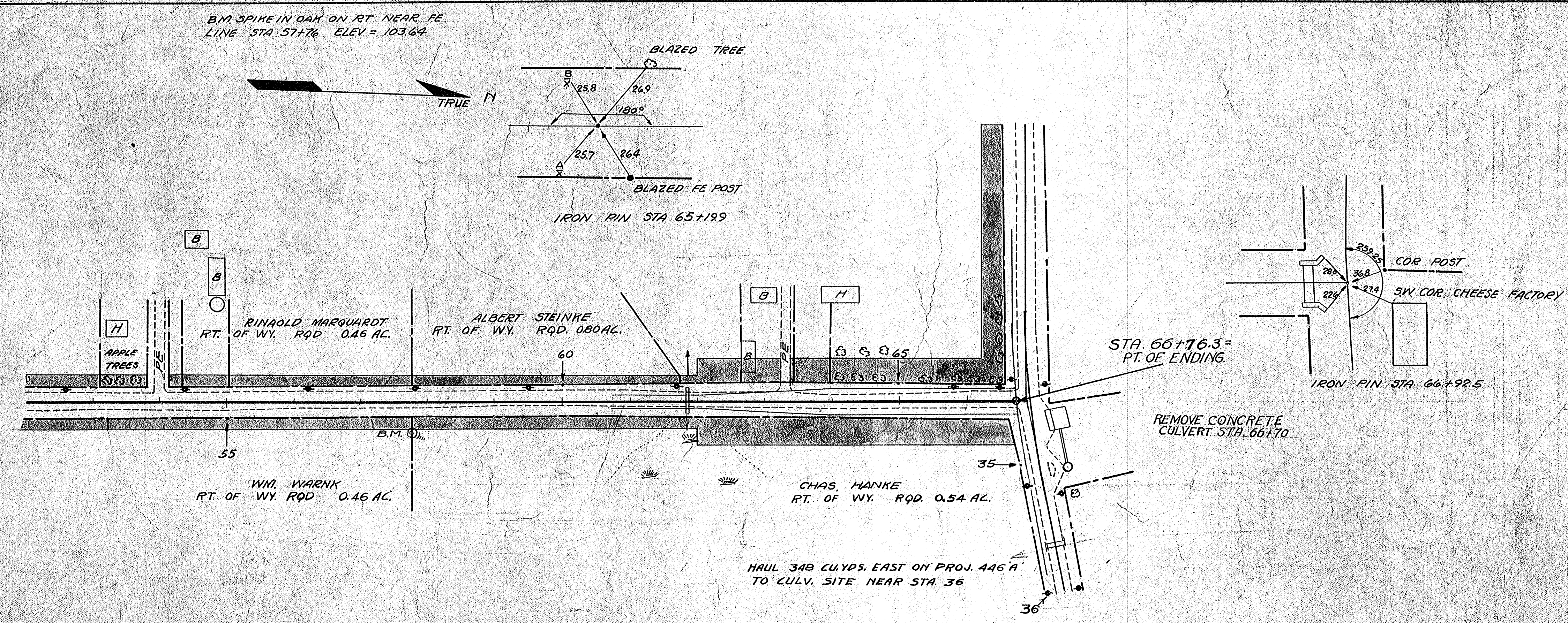


DATE: 10/1/49  
 DRAWN BY: H.P.H.  
 CHECKED BY: W.A.H.  
 SUPERVISOR: W.A.H.  
 PROJECT: 104-100  
 SHEET: 5 OF 13

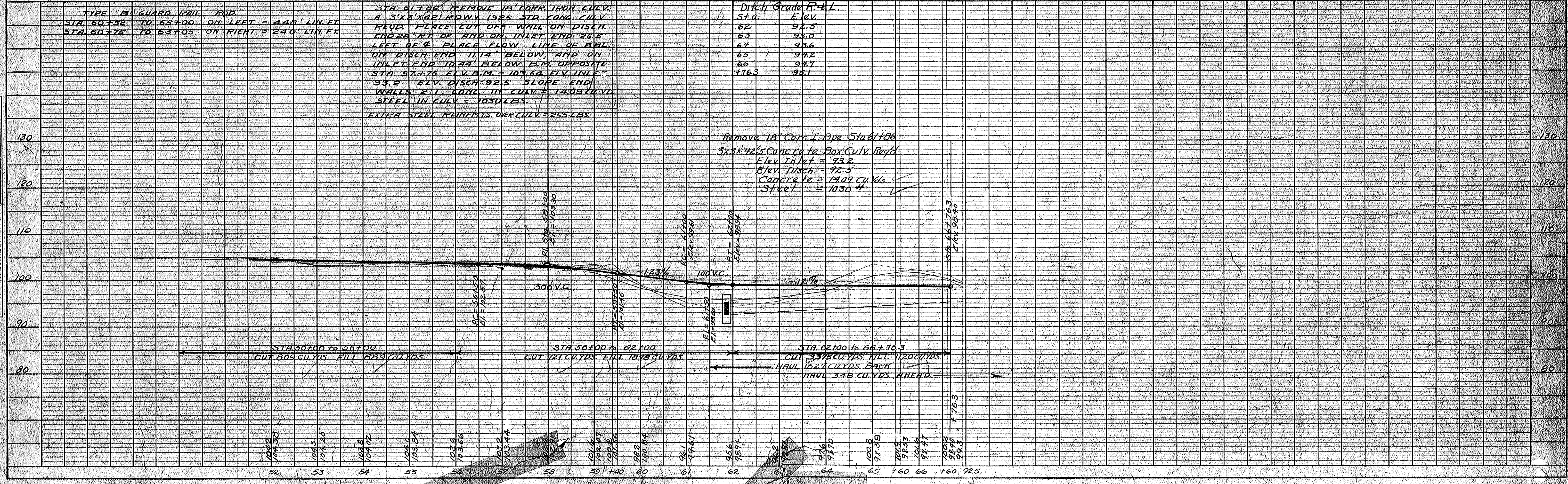


PLAN  
 SURVEYED BY: B.D.T.  
 PLOTTED BY: B.D.T.  
 CHECKED BY: W.L.L.  
 DATE: 11/2/66

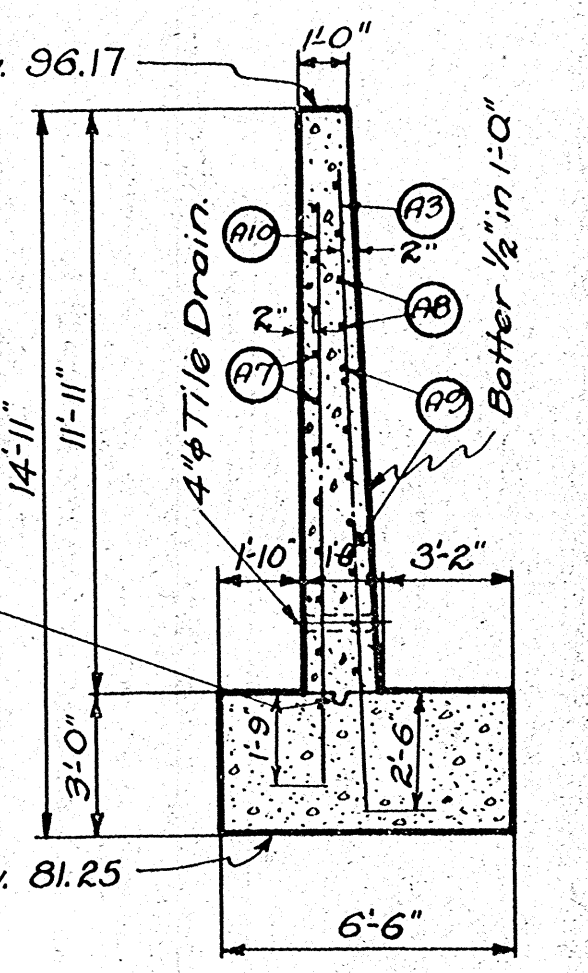
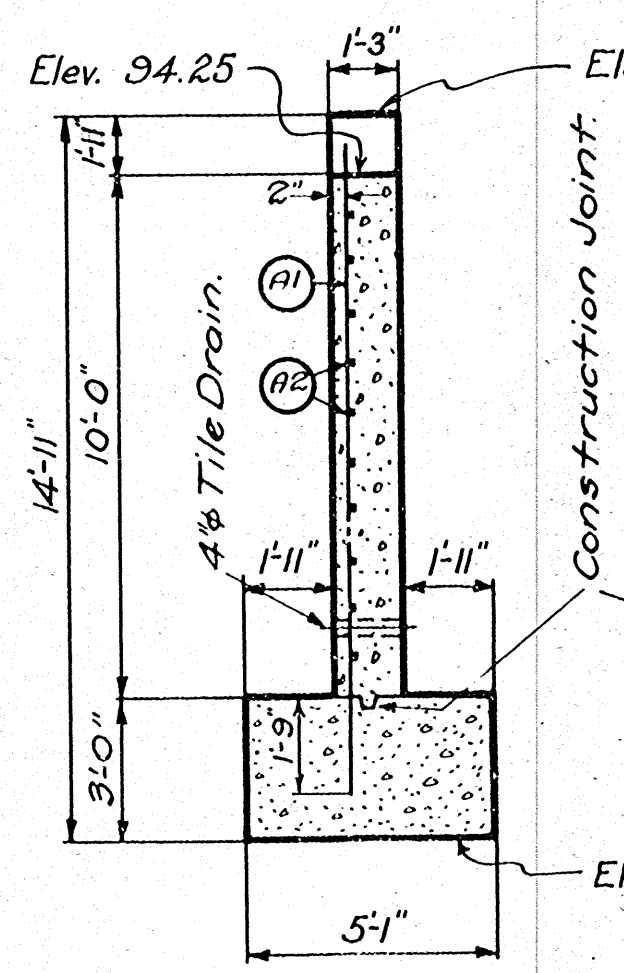
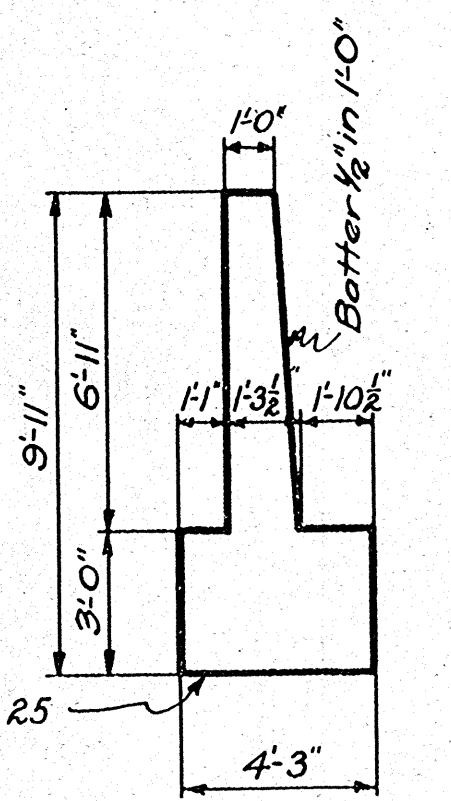
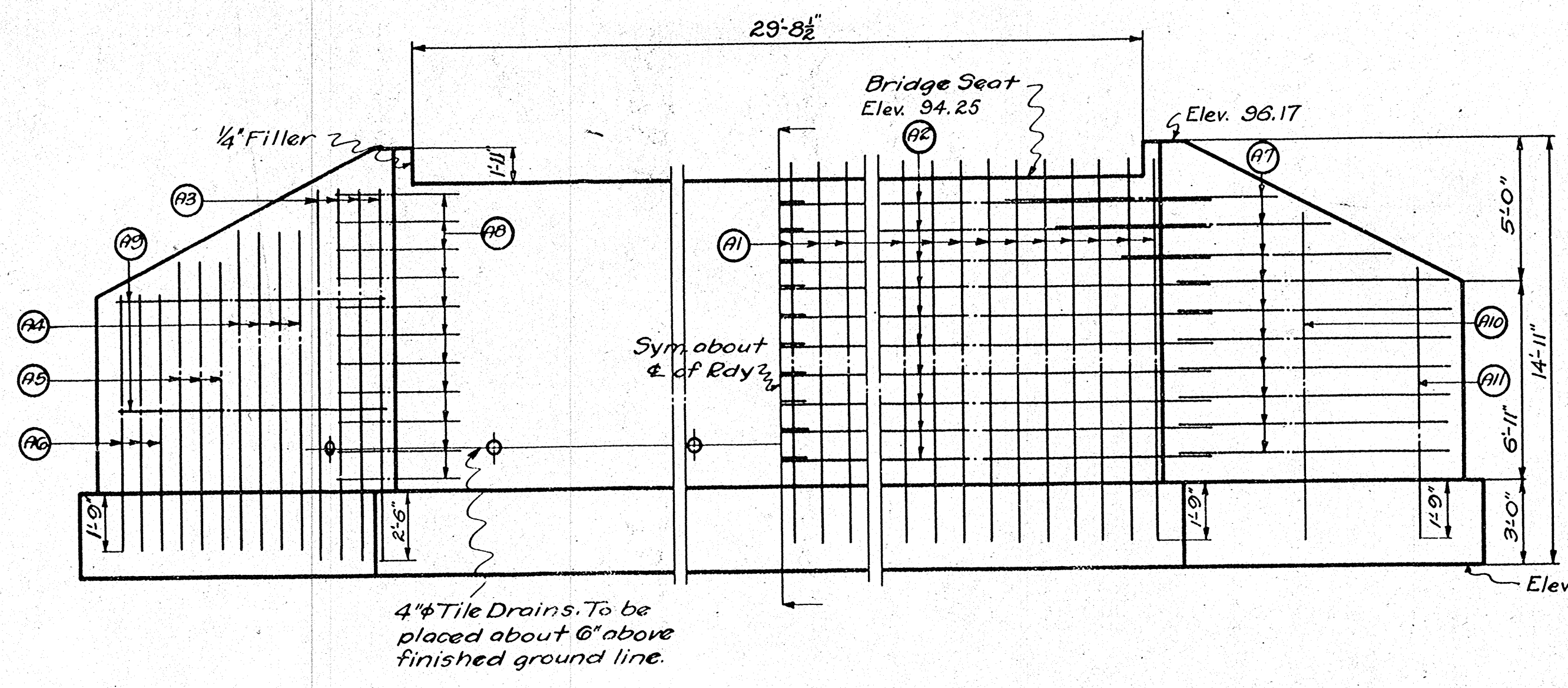
PROFILE  
 SURVEYED BY: B.D.T.  
 PLOTTED BY: B.D.T.  
 CHECKED BY: W.L.L.  
 DATE: 11/2/66



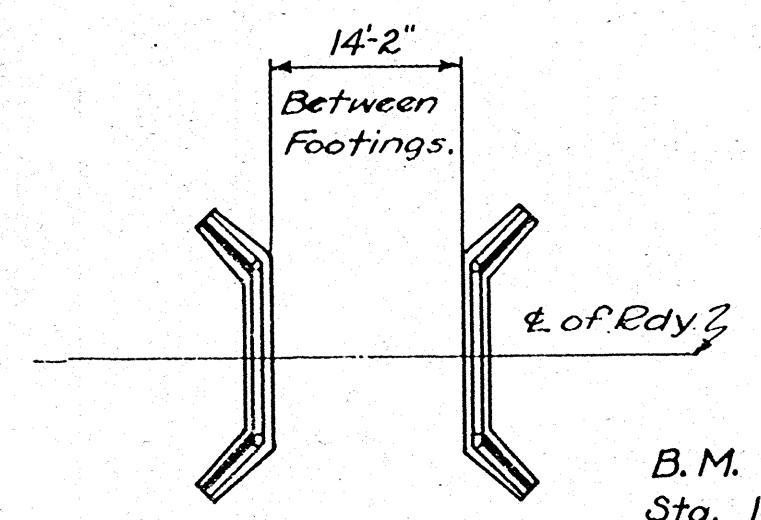
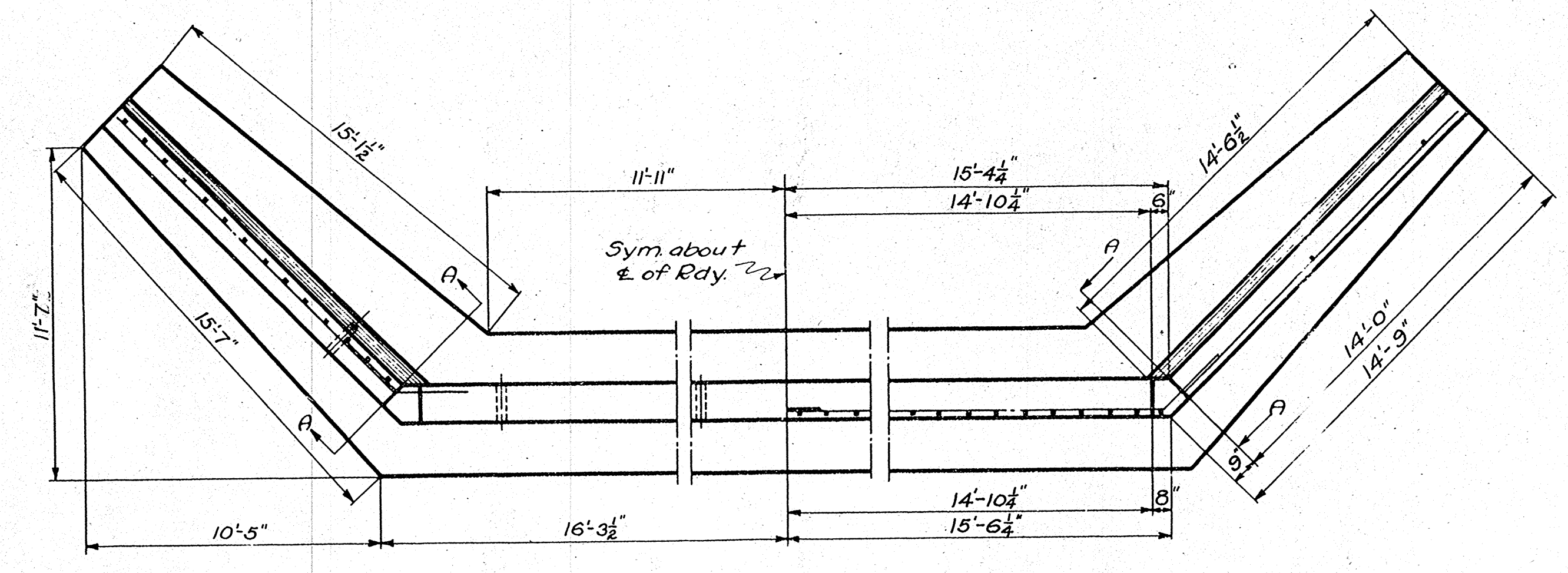
NET LENGTH CENTER LINE STA 55+00 TO 66+76.3 = 1176.3 LIN. FT.





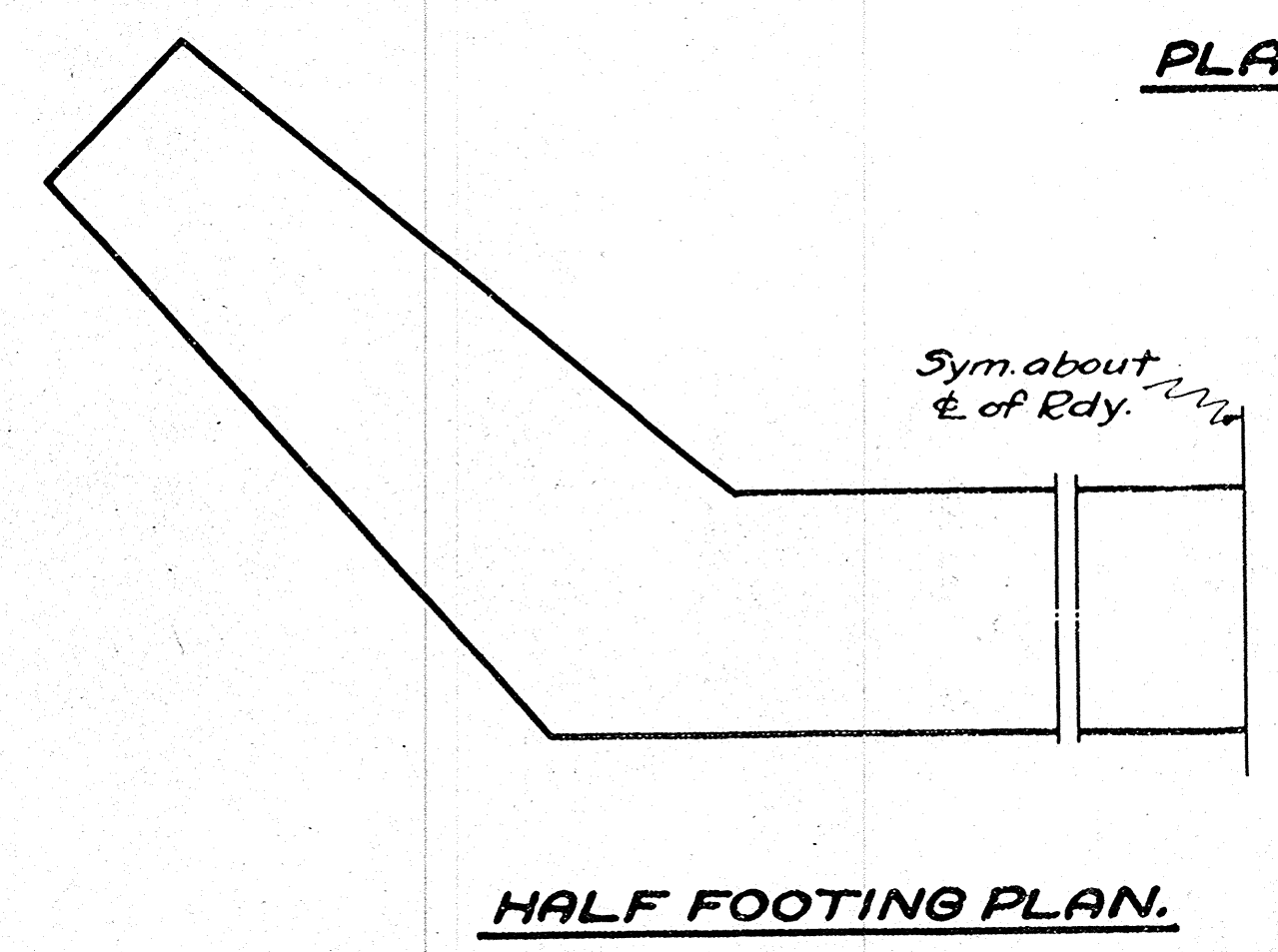


**DETAIL OF CONSTRUCTION JOINT.**  
See Specifications under "Depositing Concrete."



**BILL OF BARS.**

NO.	MARK	SIZE	LENGTH	SPACING	LOCATION
62	A1	1/2"φ	12'-9"	1'-0"cts	Vertical in body. (Front Face)
40	A2	1/2"φ	13'-0"	1'-0"cts	Horizontal in body. (Front Face)
10	A3	3/4"φ	13'-0"	1'-0"cts	Vertical in wings. (Back Face)
16	A4	1/2"φ	10'-6"	1'-0"cts	Vertical in wings. (Back Face)
12	A5	1/2"φ	9'-6"	1'-0"cts	Vertical in wings. (Back Face)
12	A6	1/2"φ	8'-6"	1'-0"cts	Vertical in wings. (Back Face)
40	A7	1/2"φ	14'-0"	1'-0"cts	Horizontal in wings. (Front Face)
40	A8	1/2"φ	5'-0"	1'-0"cts	Horizontal in corners. (Back Face)
8	A9	1/2"φ	14'-0"	shown	Horizontal in wings. (Back Face)
4	A10	1/2"φ	11'-0"	shown	Vertical in wings. (Front Face)
4	A11	1/2"φ	9'-0"	shown	Vertical in wings. (Front Face)



**GENERAL NOTES.**

Concrete shall be class "A"-1:2:4 proportions.  
Bevel exposed edges of concrete 1".  
Reinforcement shall be mechanical bond bars of net section equal to the area of bars specified.

**ESTIMATED QUANTITIES.**

Concrete: 121.4 cu. yds.  
Reinforcing Steel: 2730 lbs.  
Tile Drains: 4"φ 16 lin. ft. reqd.

**SUPERSTRUCTURE-ONE SPAN-H 18-28**

BRIDGE JOB NO. B4699

WISCONSIN HIGHWAY COMMISSION  
REINFORCED CONCRETE ABUTMENTS  
FOR THE

**HAHN BRIDGE**  
TOWN OF FREMONT WAUPACA CO.

CORRECT: *G. J. Kneip*  
BRIDGE ENGINEER

APPROVED: *C. R. Baymuth*  
DESIGN ENGINEER

APPROVED: *W. H. A. Trullinger*  
STATE HIGHWAY ENGINEER

Drawn: R.E.B.  
Checked: *W. H. A. Trullinger*

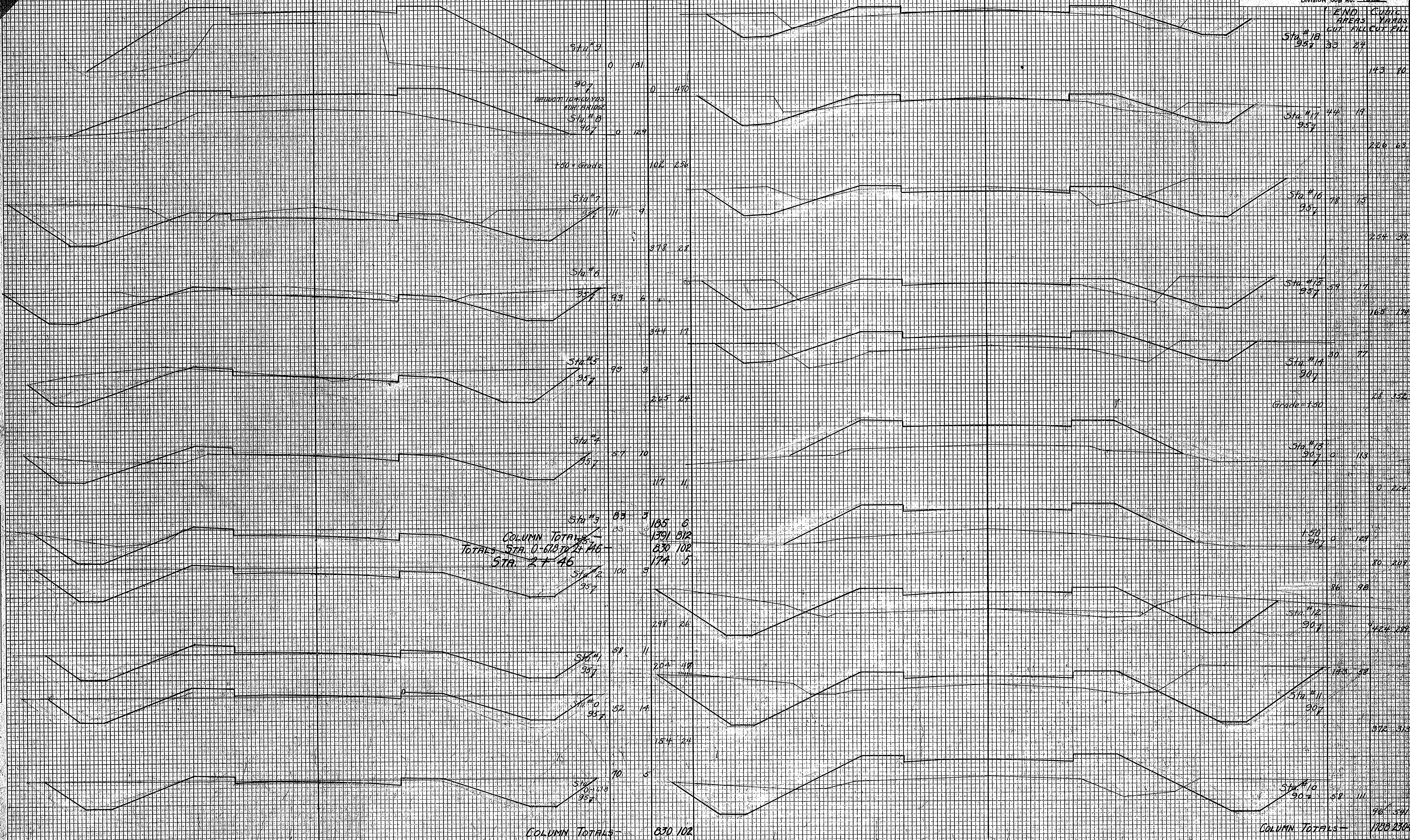


END CUBIC  
AREAS YARDS  
CUT FILL CUT FILL

END CUBIC  
AREAS YARDS  
CUT FILL CUT FILL

ORIGINAL SURVEY PLOTTED  
NOTE BOOK AREAS CHECKED

ORIGINAL SURVEY PLOTTED  
NOTE BOOK AREAS CHECKED



FED. ROAD DIST. No.	STATE	FED. AID PROJ. No.	SHEET No.	TOTAL SHEETS
4	W.S.C.		10	13

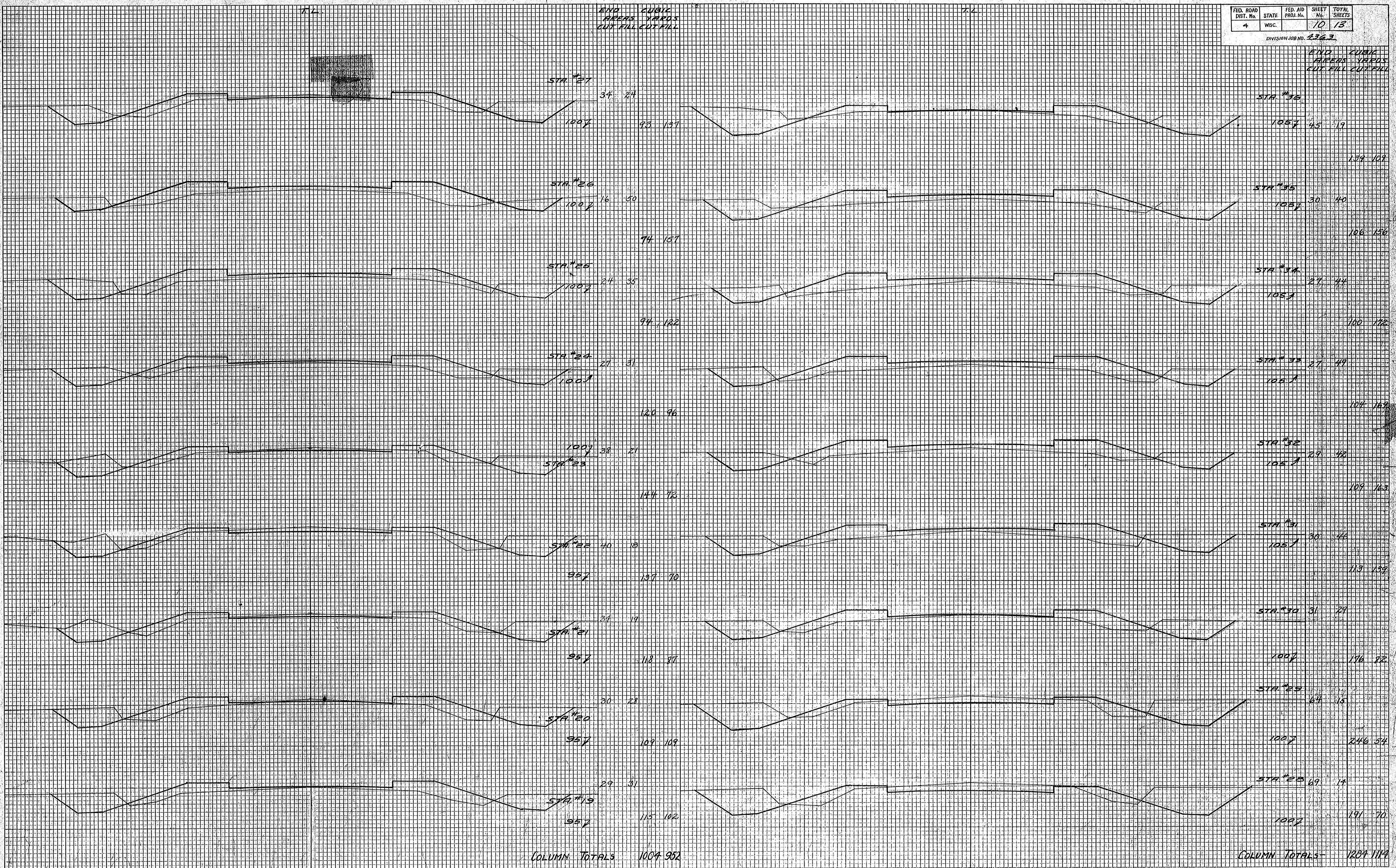
DIVISION JOB NO. 2363

END CUBIC  
FEET FEET  
CUT FILL CUT FILL

END CUBIC  
FEET FEET  
CUT FILL CUT FILL

DATE: \_\_\_\_\_  
BY: HLL  
SURVEYED: \_\_\_\_\_  
PLOTTED: \_\_\_\_\_  
NOTE BOOK: \_\_\_\_\_  
AREAS CHECKED: \_\_\_\_\_  
NO.:

DATE: \_\_\_\_\_  
BY: HLL  
SURVEYED: \_\_\_\_\_  
PLOTTED: \_\_\_\_\_  
NOTE BOOK: \_\_\_\_\_  
AREAS CHECKED: \_\_\_\_\_  
NO.:



FED. ROAD DIST. NO.	STATE	FED. AID PROJ. NO.	SHEET NO.	TOTAL SHEETS
4	WISC.		11	13

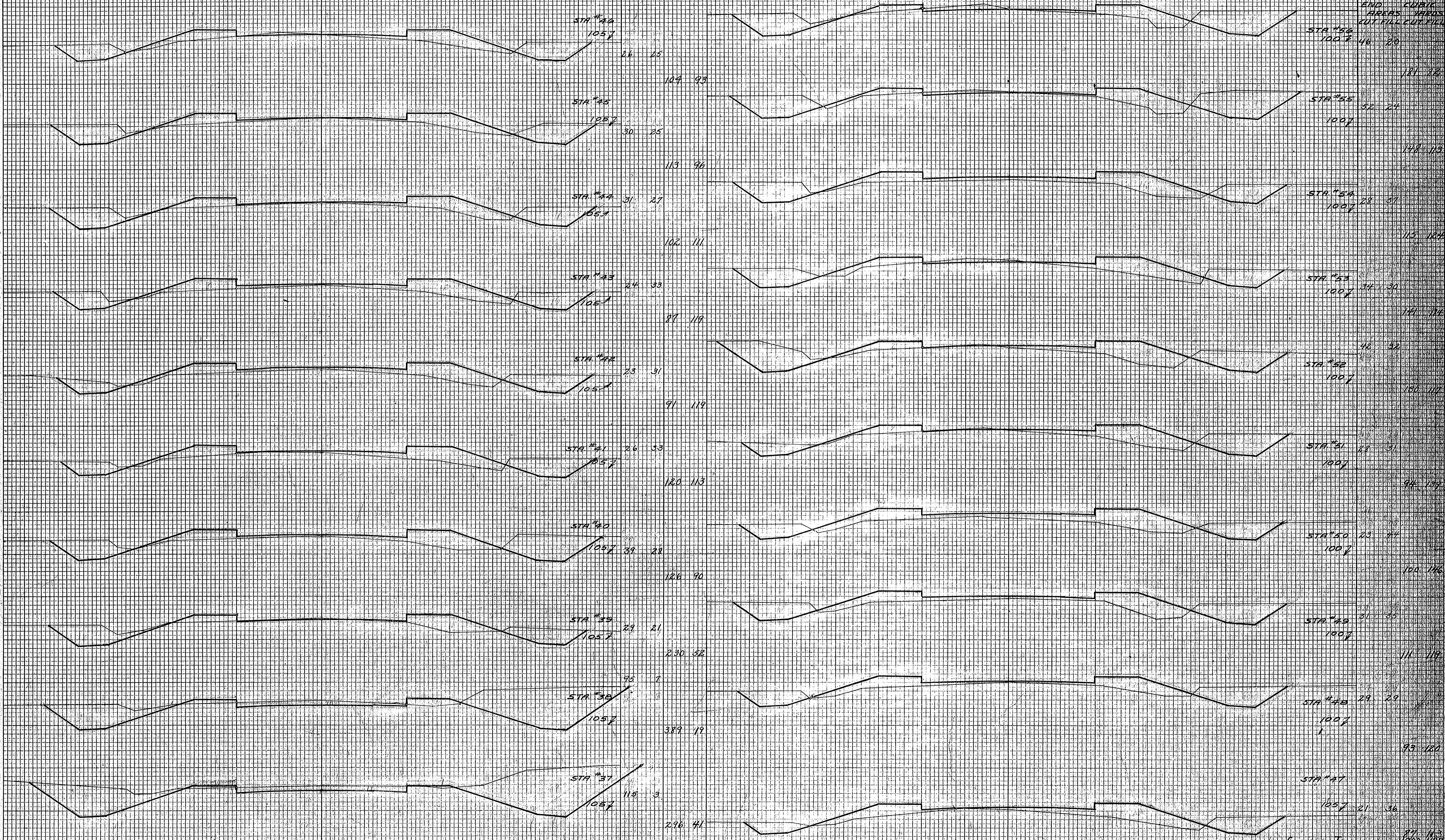
DIVISION JOB NO. 2363

DATE 5/26  
BY ACC  
SURVEYED, PLOTTED, AREA CHECKED

DATE  
BY  
SURVEYED, PLOTTED, AREA CHECKED

7.2  
END AREAS CUBIC YARDS CUT FILL CUT FILL

7.2



COLUMN TOTALS 1650 853

COLUMN TOTALS 1200 1187

END AREAS CUT FILL  
 CUBIC YARDS CUT FILL

END AREAS CUT FILL  
 CUBIC YARDS CUT FILL

DATE 9-28  
 BY H.C.C.  
 SURVEYED PLOTTED  
 NOTE BOOK AREAS CHECKED

DATE  
 BY  
 SURVEYED PLOTTED  
 NOTE BOOK AREAS CHECKED

+90-Grade

THIS SECTION NOT USED

STA #62 0 174  
 957

0 610

STA #64 205 0  
 1007

STA #61 957 0 156  
 957

0 538

658 0

STA #60 9 134  
 957

91 286

STA #63 340 0  
 1007

519 0

STA #59 1007 72 70  
 1007

104 91

STA #62 361 0  
 1007

819 0

STA #58 1007 68 53  
 1007

215 188

STA #65 375 0  
 1007

376 24

STA #57 1007 48 38  
 1007

157 139

STA #64 382 66  
 1007

356 46

STA #56 137 37 37  
 1007

137 106

STA #63 957 40 176  
 1007

7 648

COLUMN TOTALS 1374 106  
 721 1878

COLUMN TOTALS 3375 1120

# GRADE SHEET

FED. ROAD DIST. NO.	STATE	FED. AID PROJ. NO.	SHEET NO.	TOTAL SHEETS
4	WISC.		13	13
DIVISION JOB NO. 2363				

STAKE NO.	DISTANCE FROM STAKE TO C.L. OF NEW ROAD	DISTANCE CENTER OF NEW SUBGRADE ABOVE OR BELOW TOP OF STAKE	CUT OR FILL	ELEVATION TOP OF STAKE	DISTANCE C.L. TO SLOPE STAKES		STAKE NO.	DISTANCE FROM STAKE TO C.L. OF NEW ROAD	DISTANCE CENTER OF NEW SUBGRADE ABOVE OR BELOW TOP OF STAKE	CUT OR FILL	ELEVATION TOP OF STAKE	DISTANCE C.L. TO SLOPE STAKES		STAKE NO.	DISTANCE FROM STAKE TO C.L. OF NEW ROAD	DISTANCE CENTER OF NEW SUBGRADE ABOVE OR BELOW TOP OF STAKE	CUT OR FILL	ELEVATION TOP OF STAKE	DISTANCE C.L. TO SLOPE STAKES			
					LEFT OF C.L.	RIGHT OF C.L.						LEFT OF C.L.	RIGHT OF C.L.						LEFT OF C.L.	RIGHT OF C.L.		
0+00			CUT 0.3		33.0	CUT	41			FILL 0.1		31.0	CUT									
0			GRADE		32.5 "		42			GRADE		31.5 "										
1			CUT 0.2		33.0 "		43			CUT 0.1		32.0 "										
2			" 0.7		34.0 "		44			GRADE		32.5 "										
3			" 1.0		34.5 "		45	24.6		CUT 0.1		32.0 "										
4			GRADE		35.5 "		46			GRADE		31.5 "										
5	41.3'		GRADE		35.0 "		47			FILL 0.2		31.0 "										
6			CUT 1.0		36.0 "		48			GRADE		31.5 "										
7			" 1.3		37.0 "		49			FILL 0.1		32.0 "										
8			FILL 1.8		29.5	FILL	50	24.2		" 0.4		31.5 "										
9			" 1.5		27.5 "		51			" 0.1		31.0 "										
10	23.2		" 2.1		38.0	CUT	52			" 0.2		34.0 "										
11			" 1.0		39.5 "		53			CUT 0.1		32.0 "										
12			" 2.1		40.0 "		54			FILL 0.2		32.5 "										
150			" 2.3		24.5	FILL	55	22.7		CUT 0.2		32.5 "										
13			" 2.3		23.5 "		56			FILL 0.1		32.5 "										
14			" 1.1		32.5	CUT	57			" 0.2		32.0 "										
15	24.2'		CUT 0.2		34.0 "		58			" 0.3		32.5 "										
16			" 0.6		33.5 "		59			" 0.4		35.0 "										
17			" 0.3		34.5 "		60			" 1.4		34.0 "										
18			" 0.2		33.0 "		61	23.8		" 2.6		30.5 "										
19			GRADE		32.0 "		62			" 3.5		26.5	FILL									
20	25.0		CUT 0.4		32.0 "		63			" 3.3		25.5 "										
21			" 0.6		31.5 "		64			" 2.6		40.5	CUT									
22			" 0.7		31.5 "		65			" 1.1		57.5 "										
23			GRADE		31.0 "		66	26.1		CUT 2.2		58.0 "										
24			GRADE		32.0 "		67			" 3.4		51.5 "										
25	22.7		FILL 0.2		32.5 "		68			" 3.1		51.0 "										
26			" 0.3		31.5 "		69			" 1.8		48.5 "										
27			CUT 0.4		32.0 "		70			" 1.8		48.0 "										
28			" 1.0		33.5 "		71															
29			" 0.8		33.5 "		72															
30	24.3		" 0.2		32.0 "		73															
31			FILL 0.2		32.0 "		74															
32			" 0.2		32.0 "		75															
33			" 0.2		32.0 "		76															
34			" 0.3		31.5 "		77															
35	23.8		" 0.4		32.5 "		78															
36			CUT 0.2		34.0 "		79															
37			" 0.7		34.5 "		80															
38			" 0.5		33.0 "		81															
39			" 0.1		32.5 "		82															
40	24.6'		FILL 0.1		32.0 "		83															

NOTE: IN GRADING CHECK HEIGHT OF FINISHED GRADE BY COLUMN NO. 3 OF GRADE SHEET. IN SETTING SLOPE STAKES, FACE IN DIRECTION IN WHICH STATION NUMBERS INCREASE.

DATE \_\_\_\_\_ BY \_\_\_\_\_  
 FINAL SURVEY PLOTTED NOTE BOOK NO. \_\_\_\_\_  
 SURVEYED PLOTTED AREAS CHECKED

DATE \_\_\_\_\_ BY \_\_\_\_\_  
 ORIGINAL SURVEY PLOTTED NOTE BOOK NO. \_\_\_\_\_  
 SURVEYED PLOTTED AREAS CHECKED